

SafeGrid Earthing Software complies with IEEE Std 80 and IEC 60479.

Project:
Sample Project
Scenario:
Sample Scenario

Design Inputs

Table 1: Soil characteristics

Model	Determine values using soil modelling program (S-RES)
Top layer resistivity (Ohm.m)	35.006
Top layer depth (m)	1.7
Bottom layer resistivity (Ohm.m)	88.254

Refer to separate page for LM-RES soil modelling.

Table 2: Grid energisation

Source	Specify ground fault current
Units	Current (A)
Magnitude (real)	6500
Magnitude (imag)	0

Table 3: Grid and rod conductor size

Method	Calculate grid conductor size
Conductor radius (mm)	7.63

Refer to separate page for conductor size calculation.

Table 4: Measurement units

Units	Metric
-------	--------

Table 5: System

Frequency (Hz)	50
----------------	----

Levenberg-Marquardt Soil Resistivity (LM-RES) Modelling

Table 6: User Inputs

Soil model	Horizontal 2-Layer
Measurement method	Wenner
Measurement values	Resistivity (Ohm.m)
Account for probe depth? (True/False)	FALSE
Driven depth at short spacings (m)	-
Remove outliers? (True/False)	FALSE

Table 7: Field measurements

	Spacing (m)	Resistivity (Ohm.m)	Included? (True/False)
R1	1	36.11	TRUE
R2	2	45.89	TRUE
R3	4	52.53	TRUE
R4	8	77.91	TRUE
R5	16	78.41	TRUE
R6	32	86.83	TRUE

Table 8: Results

Top layer soil resistivity (Ohm.m)	35.006
Top layer depth (m)	1.7
Bottom layer soil resistivity (Ohm.m)	88.254
Reflection factor, k	0.432
Goodness of Fit (R-square)	4.351

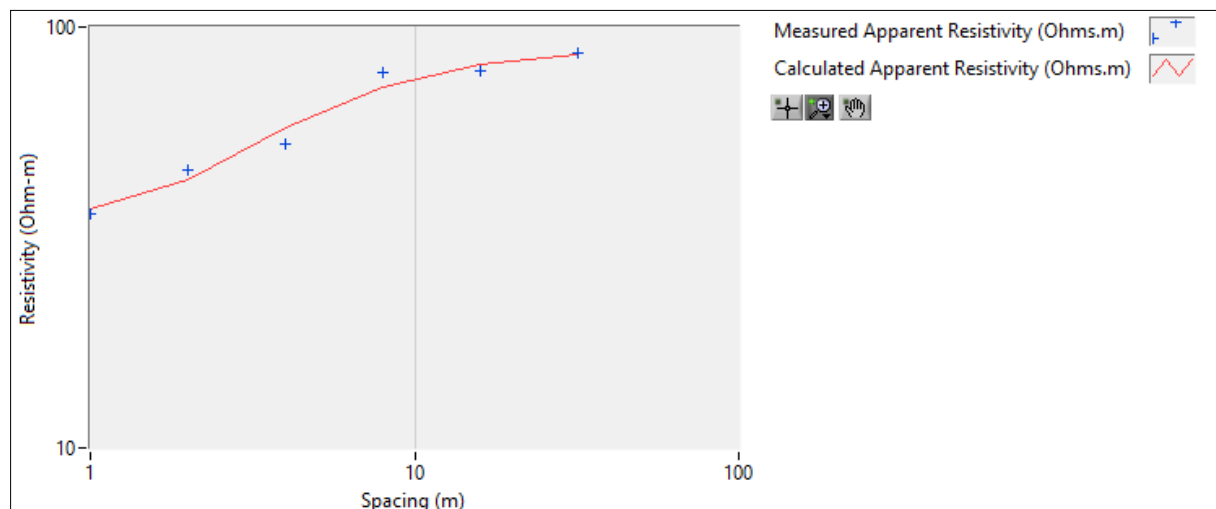


Figure 1: Non-linear model fit to field measurements

Conductor Ampacity Calculation in accordance with IEEE Std 80

Table 9: User Inputs

Conductor type	Copper, annealed soft-drawn (100% conductivity)
Symmetrical RMS current magnitude (kA)	40
Maximum fault duration (s)	1
Ambient temperature (deg.C)	20
Maximum allowable temperature	Other
Maximum temperature (deg.C)	450
Decrement factor	Computed
Decrement factor value	1.024
X/R ratio	15
System frequency (Hz)	50

Table 10: Material constants of conductor

Reference temperature for material constants (deg.C)	20
Thermal coefficient of resistivity at reference temperature (1/deg.C)	0.00393
Fusing temperature of conductor (deg.C)	1083
Resistivity of conductor at reference temperature (microOhms.cm)	1.72
Thermal capacity per unit volume (J/cm ³ .deg.C)	3.42

Table 11: Results - minimum conductor size

Conductor cross-sectional area (mm ²)	182.886310
Conductor radius (mm)	7.629844

Buried Grid Model

Table 12: Segments

No. of segments accounting for intersections only	228
No. of segments after segmentation (for accuracy)	688
Fault location (segment no.)	1
Total length of conductor network (m)	1661.839

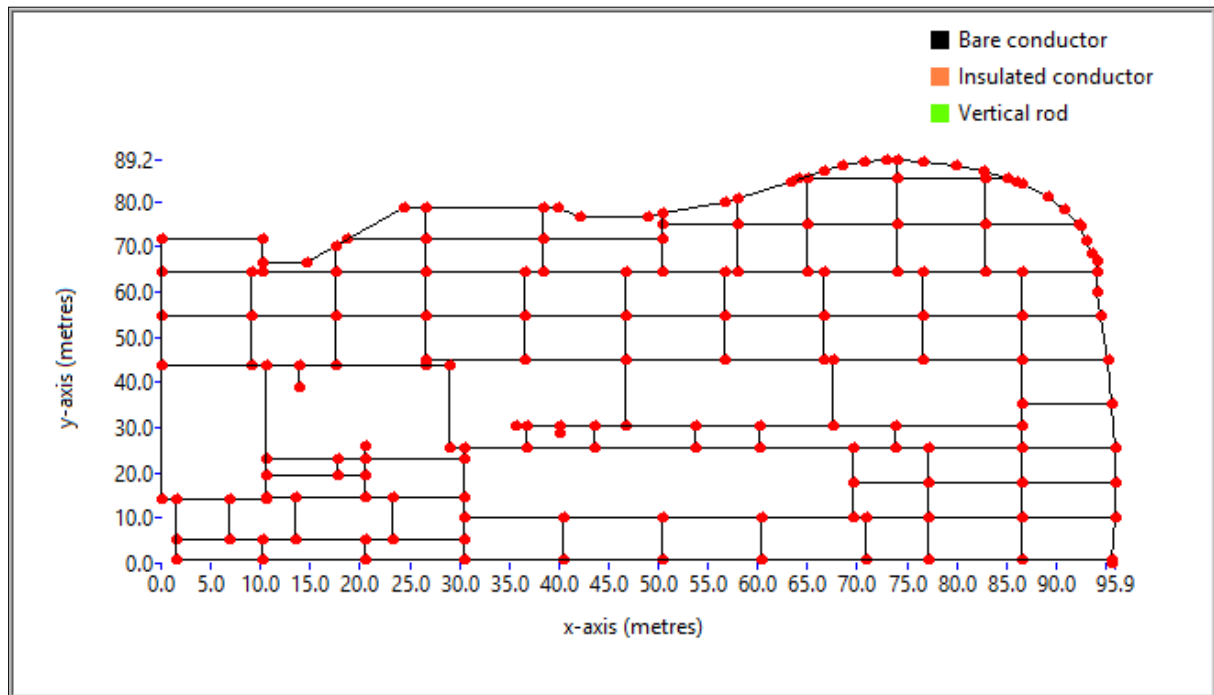


Figure 2: Buried grid preview

Safety Criteria Calculation

Table 13: User Inputs

Safety standard (body resistance)	IEC
Fibrillation current method	C1 - IEC
Body resistance curve (IEC)	95% of population exceeds curve
Conditions (IEC)	Dry
Foot resistance calculation method	IEEE80:2000
Additional series resistance (i.e. shoe or glove) (Ohms)	0
Fault clearing time (s)	0.35
System frequency (Hz)	50
System X/R ratio	20
Decrement factor	Default
Decrement factor value	1.087

Sub-surface layer resistivity (Ohm.m)	35.006
Use top layer soil resistivity? (True/False)	TRUE
Surface material resistivity (Ohm.m)	3000
Surface layer depth (m)	0.1

Table 14: Results

Allowable Touch Voltage Limit (V)	1008.626
Allowable Step Voltage Limit (V)	3353.967
Permissible body current (A)	0.264
Body resistance - 1 hand to both feet (Ohms)	1065.539
Body resistance - 1 foot to other foot (Ohms)	1065.539

Earthing System Performance

Table 15: Results

Grid Impedance, Z (Ohms)	0.418
Grid Impedance Angle (degrees)	0.291
Grid Potential Rise, GPR (V)	2714.381
Grid Potential Rise Angle (degrees)	0.291

Table 16: Summary of Inputs

Top soil layer resistivity (Ohm.m)	35.01
Depth top soil layer (m)	1.7
Bottom soil layer resistivity (Ohm.m)	88.25
Excitation current (A)	6500+j0
Faulted segment no.	1
Final no. of segments	688
Conductor radius (m)	0.00763
Conductivity of buried conductor (S/m)	57E+6
Frequency (Hz)	50
Calculation delta	0.001

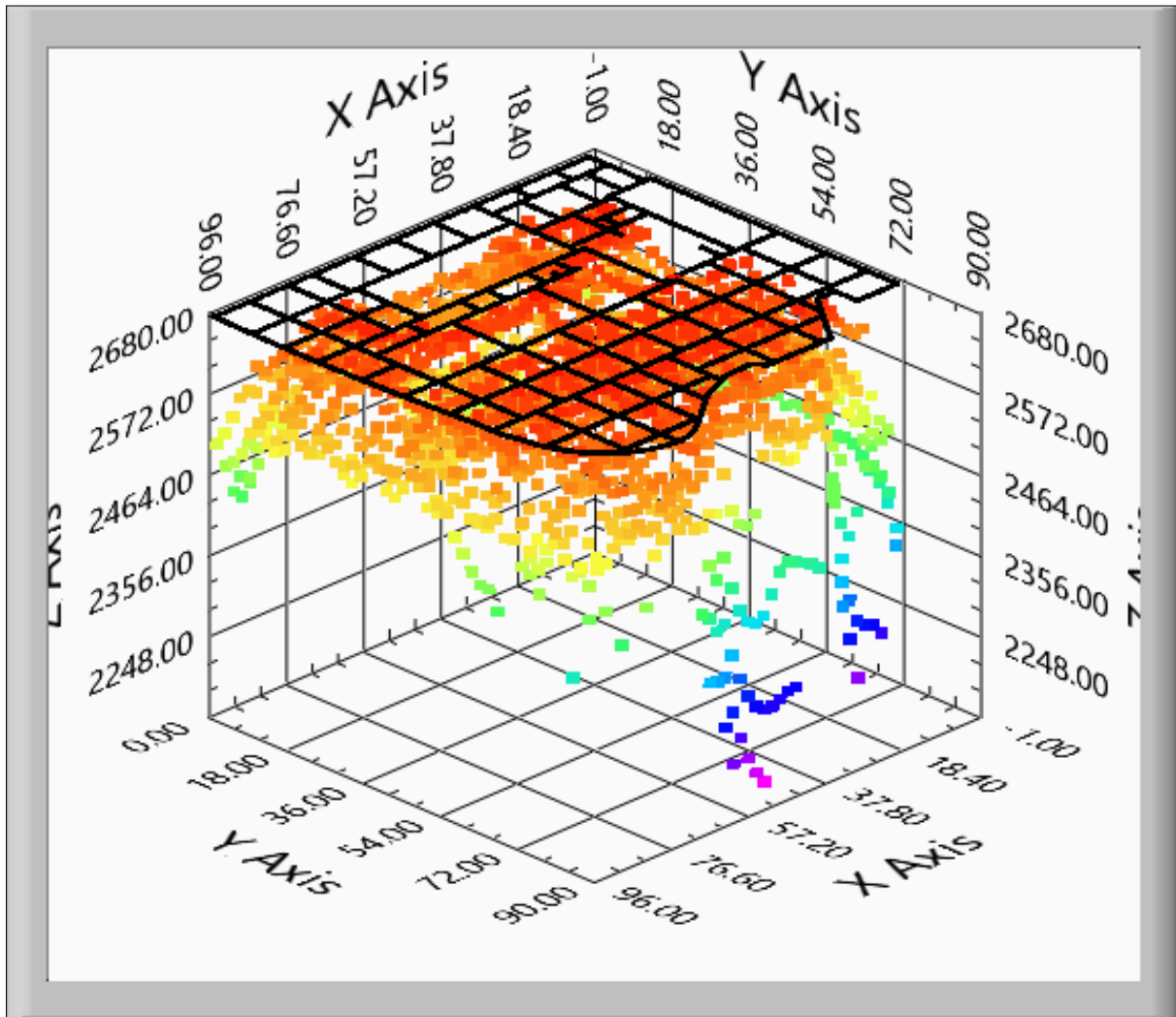


Figure 3: Surface potentials (V) - 3D view

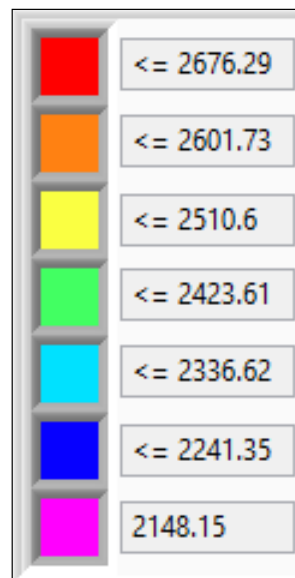


Figure 4: Surface potentials - Colour map

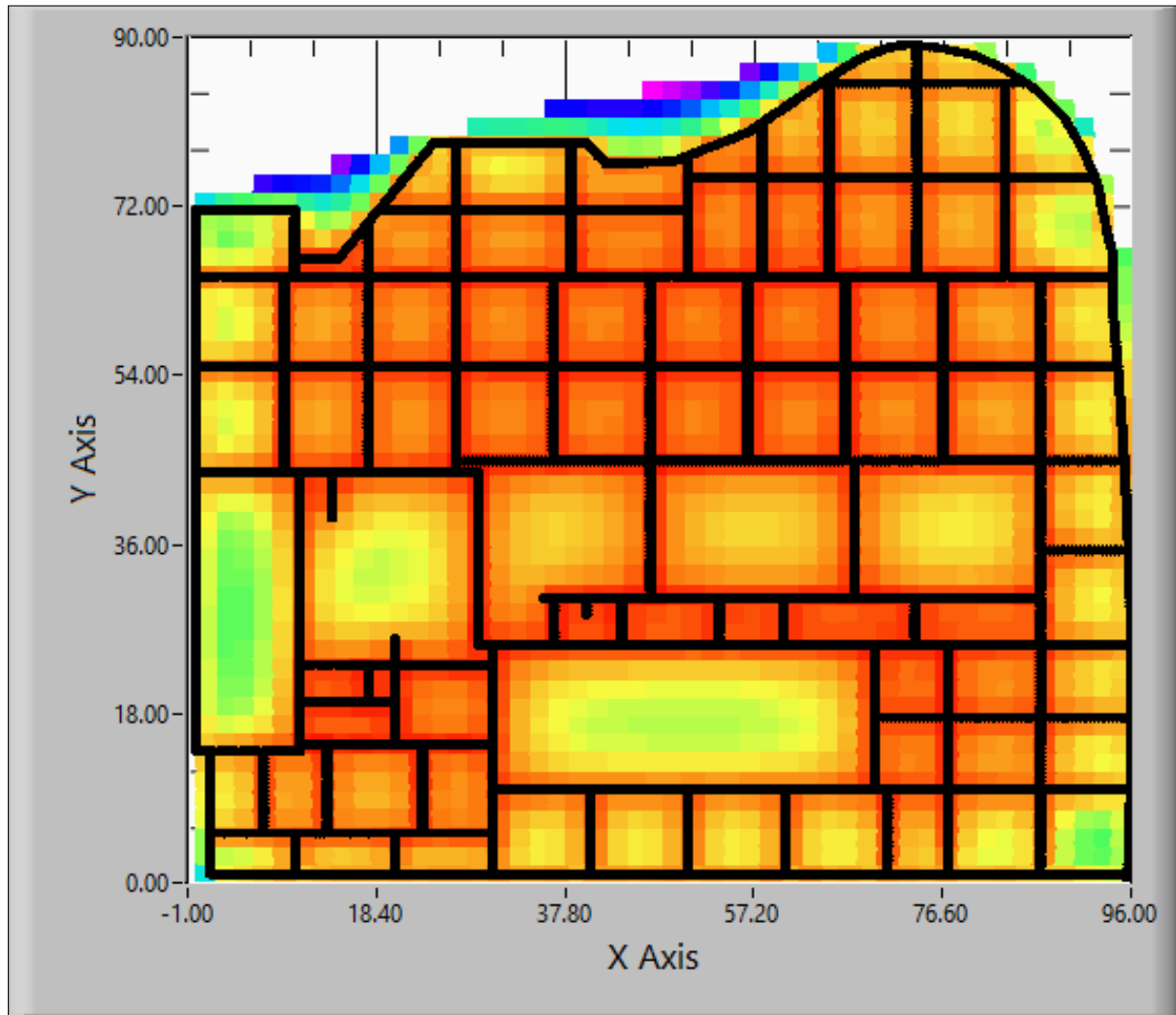


Figure 5: Surface potentials (V) - X-Y view

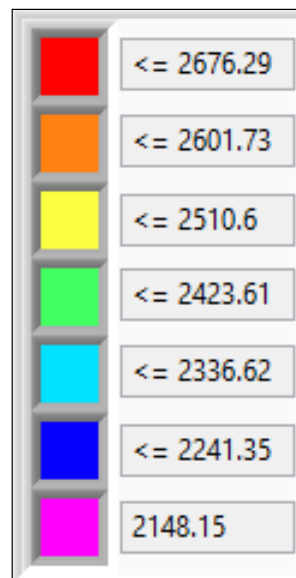


Figure 6: Surface potentials - Colour map

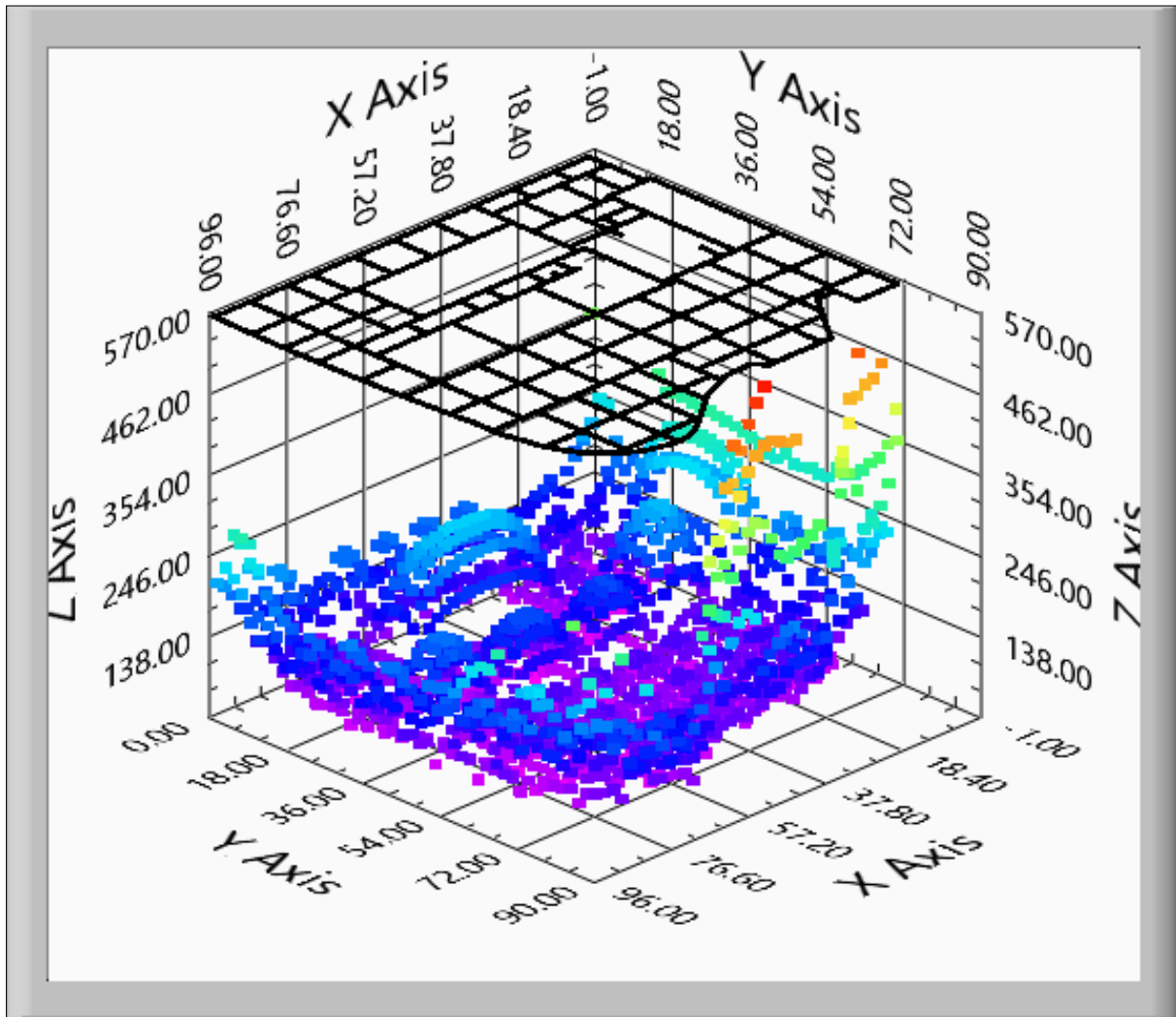


Figure 7: Touch potentials (V) - 3D view

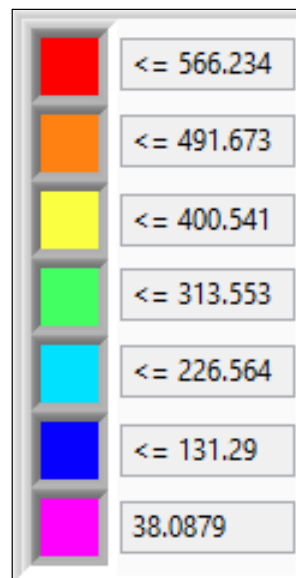


Figure 8: Touch potentials - Colour map

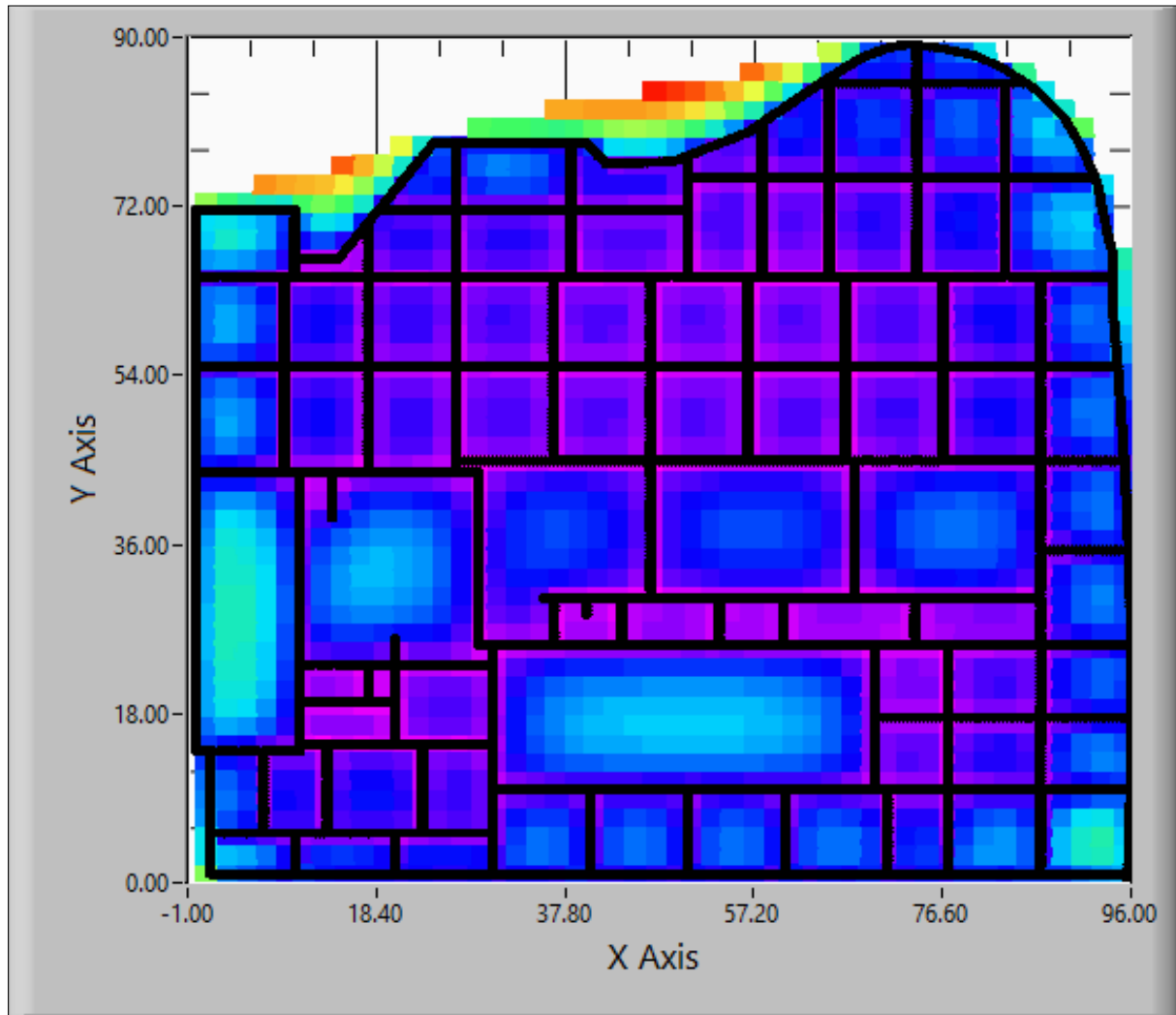


Figure 9: Touch potentials (V) - X-Y view

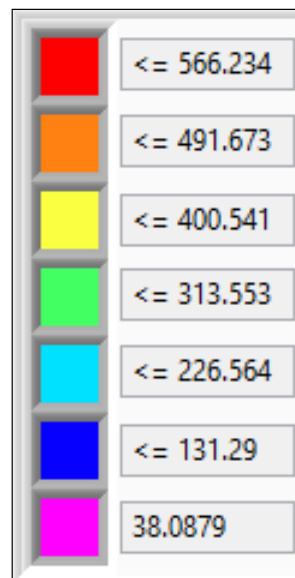


Figure 10: Touch potentials - Colour map

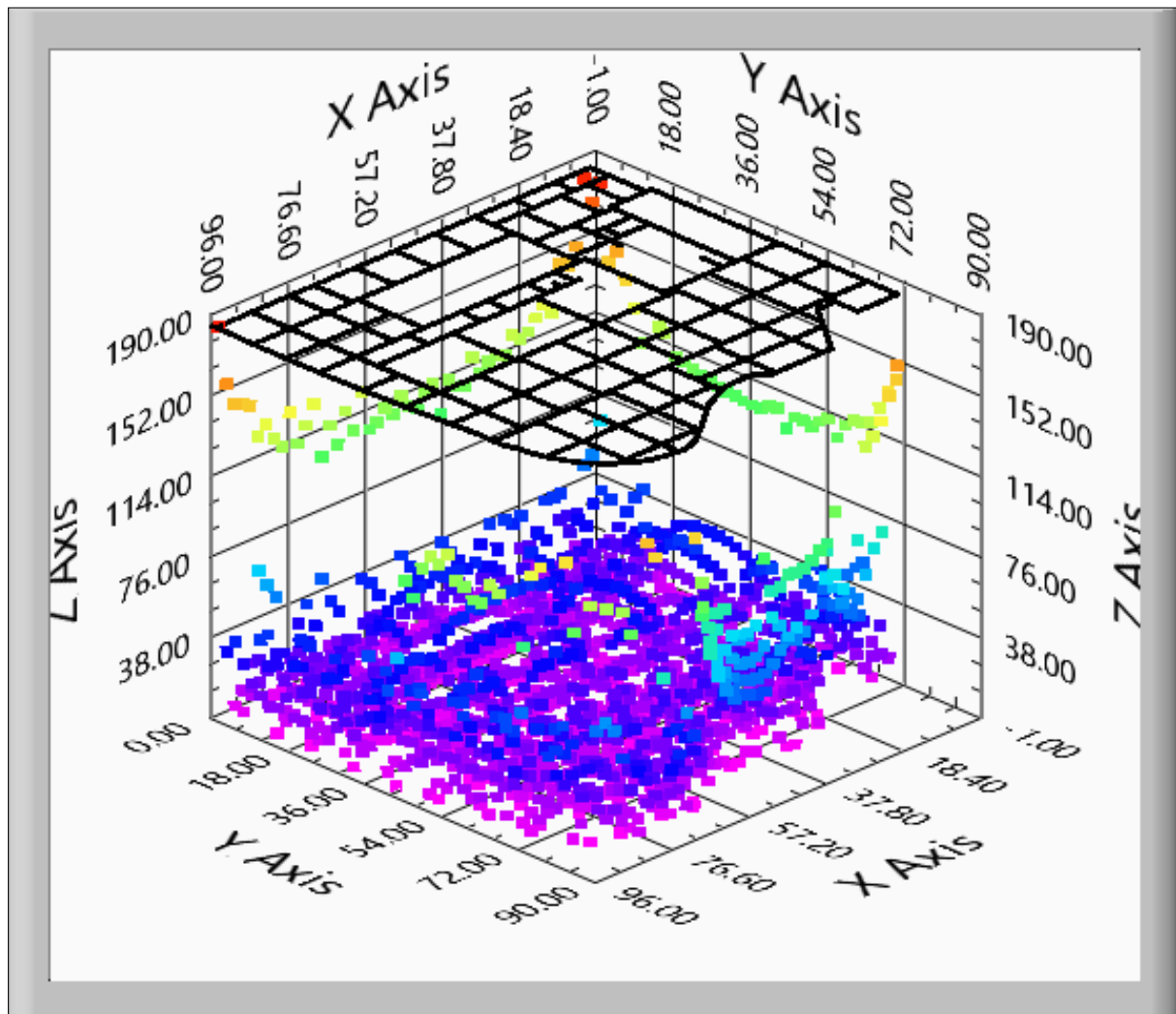


Figure 11: Step potentials (V) - 3D view

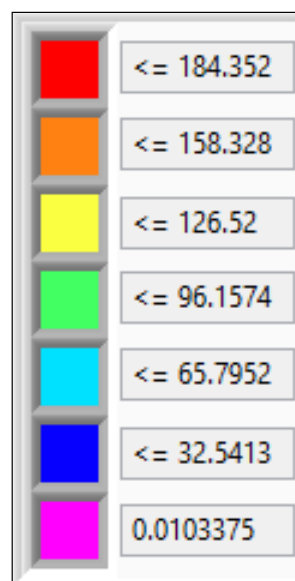


Figure 12: Step potentials - Colour map

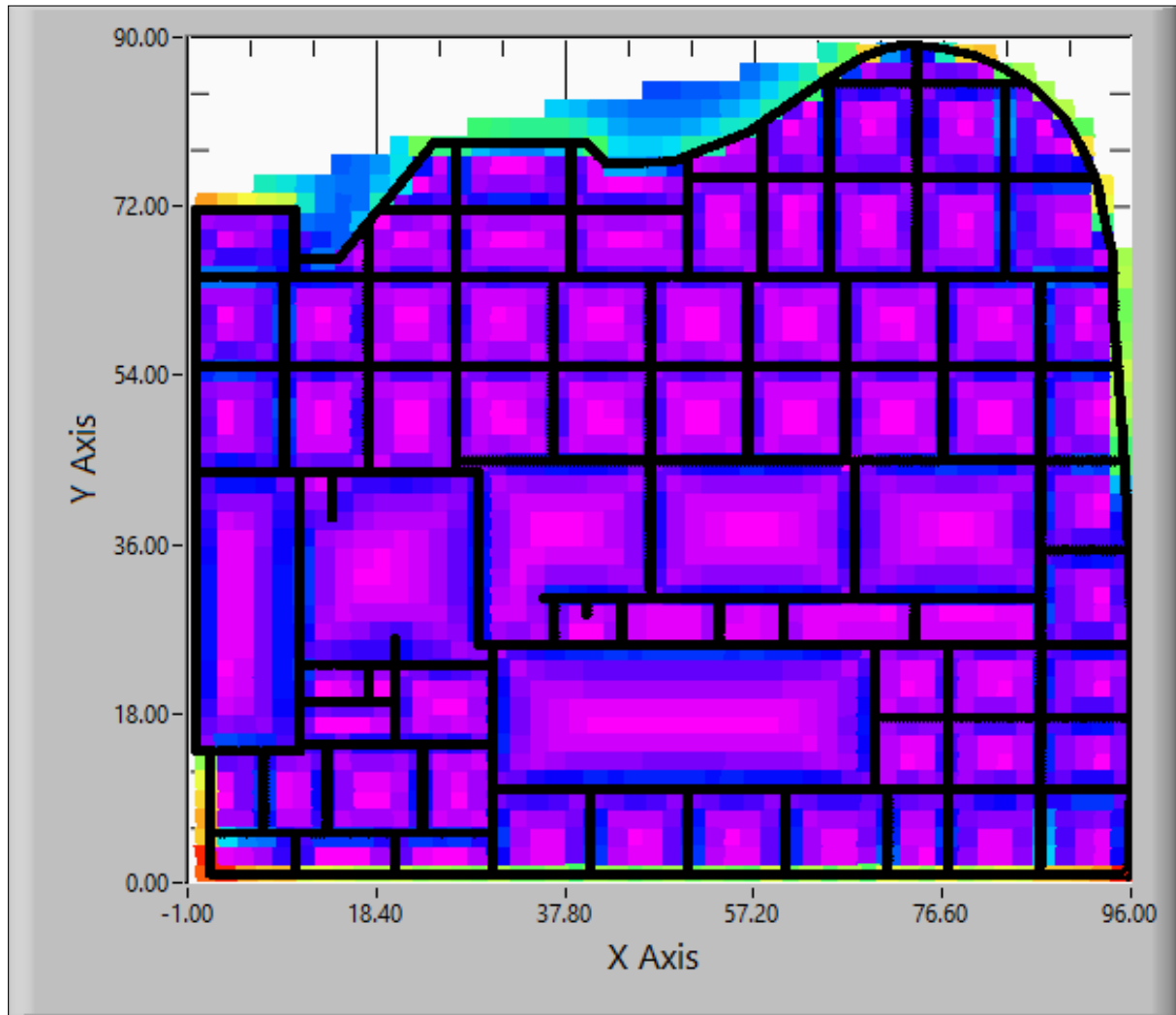


Figure 13: Step potentials (V) - X-Y view

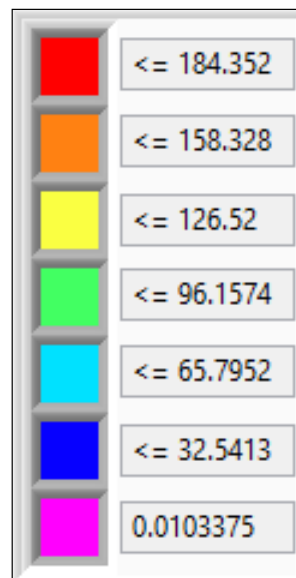


Figure 14: Step potentials - Colour map